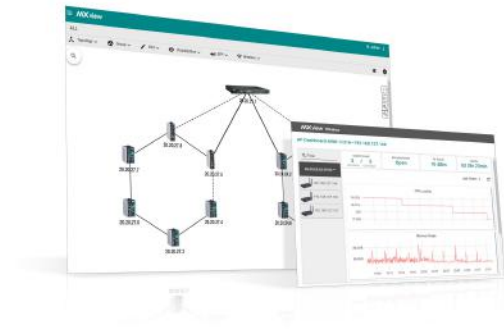


MXview Series

Industrial network management software designed for converged automation networks, supports an optional wireless add-on module



Features and Benefits

- Discovers and visualizes network devices and physical connections automatically
- Central management of configurations and firmware for Moxa devices
- Multiple options for events and notifications with self-defined threshold and duration
- Comprehensive reports, including inventory, traffic, and availability reports
- Provides RESTful API and web widget to embed MXview into industrial applications
- Supports third-party Ethernet switches through SNMP MIB files
- Generates OPC 2.0 compliant tags automatically to integrate with SCADA/HMI applications
- Dynamic topology view shows the status of wireless links and connection changes at a glance¹
- Visual, interactive roaming playback function to review the roaming history of clients¹
- Detailed device information and performance indicator charts for individual AP and client devices¹

Introduction

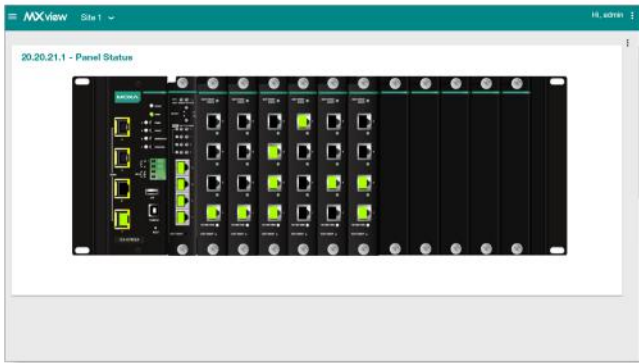
Moxa's MXview network management software is designed for configuring, monitoring, and diagnosing networking devices in industrial networks. MXview provides an integrated management platform that can discover networking devices and SNMP/IP devices installed on subnets. All selected network components can be managed via a web browser from both local and remote sites—anytime and anywhere.

In addition, MXview supports the optional MXview Wireless add-on module¹. MXview Wireless provides additional advanced functions for wireless applications to monitor and troubleshoot your network, and help you minimize downtime.

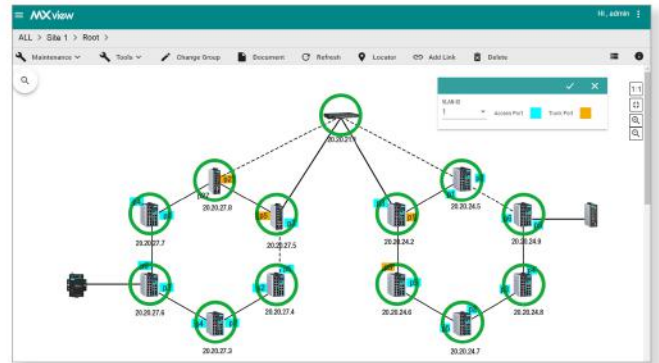
Visualization

- Discovers up to 2,000 Moxa devices and SNMP/ICMP devices within scan range
- Visualization of redundant link status and device roles of network redundancy protocols
- Visualization of graphic VLAN groups
- Security view for the security status of network devices with industrial security standard
- Displays third-party device icons
- A network management dashboard to view the network status quickly
- Visualization of network traffic loading with color-coded links
- Device front panel visualization, including ports and LED indicators
- Visualization of managed PoE device power consumption
- Wireless device dashboard that shows dynamic AP-client relationships and performance indicator charts for wireless devices¹
- Roaming playback to review a client's roaming status¹

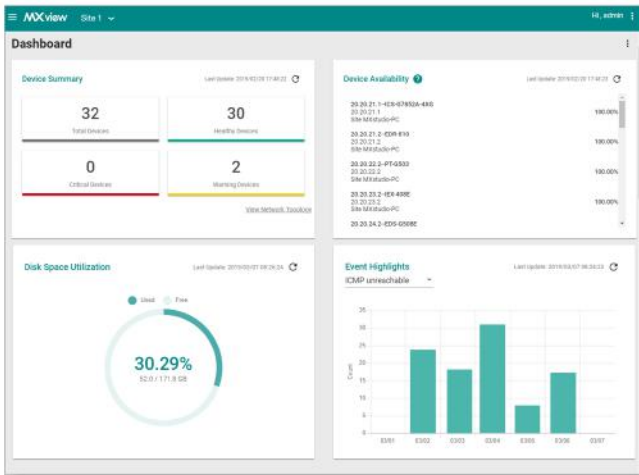
1. This feature requires the MXview Wireless add-on license (LIC-MXview-ADD-WIRELESS-MR), which can be purchased separately. An active MXview license is required in order to activate the add-on license.



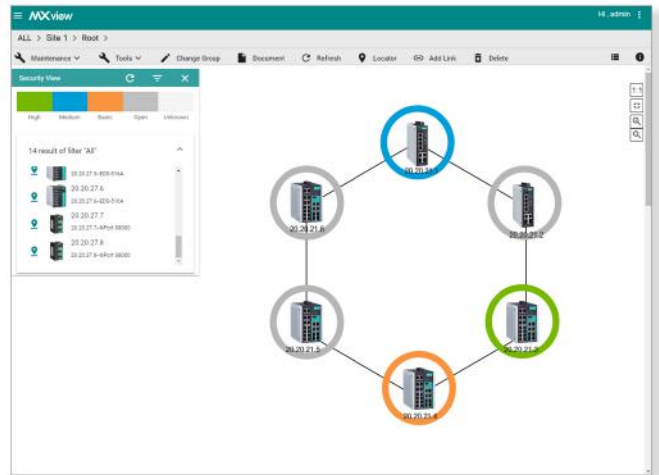
Virtual Device Panel



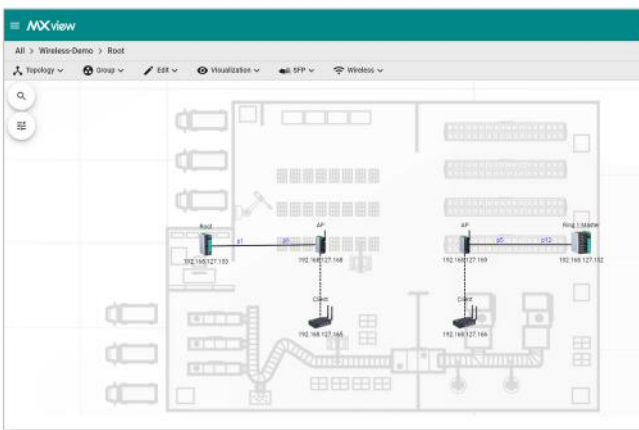
VLAN Visualization



Main Dashboard



Security View



Dynamic Topology



Device Dashboard

Network Diagnostics and Event Notification

- Detect problems in real-time with SNMP trap/inform, or periodic polling
- Generate trend graphs to track bandwidth utilization and error packet rate statistics, accurate to four decimal places
- Supports Syslog server for centralized message management
- Configurable event notification alarms sent through email, Microsoft Teams, Slack, MXview ToGo, and SNMP trap, or locally through program notification, message box, and audio alerts
- Multiple options for events and notifications with self-defined threshold and duration
- Generate OPC 2.0 compliant tags automatically to integrate with SCADA/HMI applications
- Group health OPC tag represents entire network status
- Real-time device availability monitoring
- Supports third-party Ethernet switches through MIB files
- Collaborate with third-party NMS through SNMP traps
- Provides RESTful API and web widget for integrating MXview into the existing system

Comprehensive Reports

- Maintain device availability reports and record for up to 90 days
- Generate an inventory report for each device on the network
- Compile comprehensive device properties report
- Generate network traffic trend reports

Centralized Configuration and Firmware Management

- Manage device firmware from a single platform
- In one click, back up the configuration of multiple devices and the entire MXview database, including topology, job scheduling, events, and device properties
- Scheduling for periodic configuration backup
- Save history of configuration changes
- Comparison tool for checking differences between two configurations

Mobile App for Network Monitoring

- MXview ToGo mobile app for remote monitoring and notification—anytime, anywhere
- Smart Device Identification with QR Code enhances operational efficiency
- Device Locator with mobile app reduces searching time at field sites



Specifications

Hardware Requirements

CPU	2 GHz or faster dual-core CPU
RAM	8 GB or higher
Hardware Disk Space	MXview only: 10 GB With MXview Wireless module: 20 to 30 GB ²
OS	Windows 7 Service Pack 1 (64-bit) Windows 10 (64-bit) Windows Server 2012 R2 (64-bit) Windows Server 2016 (64-bit) Windows Server 2019 (64-bit)

Management

Supported Interfaces	SNMPv1/v2c/v3 and ICMP
----------------------	------------------------

Supported Devices

AWK Products	AWK-1121 Series (v1.4 or higher) AWK-1127 Series (v1.4 or higher) AWK-1131A Series (v1.11 or higher) AWK-1137C Series (v1.1 or higher) AWK-3121 Series (v1.6 or higher) AWK-3131 Series (v1.1 or higher) AWK-3131A Series (v1.3 or higher) AWK-3131A-M12-RTG Series (v1.8 or higher) AWK-4121 Series (v1.6 or higher) AWK-4131 Series (v1.1 or higher) AWK-4131A Series (v1.3 or higher)
DA Products	DA-820C Series (v1.0 or higher) DA-682C Series (v1.0 or higher)

2. Recommended amount to store 1 month of performance and event history.

	DA-681C Series (v1.0 or higher) DA-720 Series (v1.0 or higher)
EDR Products	EDR-G903 Series (v2.1 or higher) EDR-G902 Series (v1.0 or higher) EDR-810 Series (v3.2 or higher) EDR-G9010 Series (v1.0 or higher)
EDS Products	EDS-405A/408A Series (v2.6 or higher) EDS-405A/408A-EIP Series (v3.0 or higher) EDS-405A/408A-PN Series (v3.1 or higher) EDS-405A-PTP Series (v3.3 or higher) EDS-505A/508A/516A Series (v2.6 or higher) EDS-510A Series (v2.6 or higher) EDS-518A Series (v2.6 or higher) EDS-510E/518E Series (v4.0 or higher) EDS-528E Series (v5.0 or higher) EDS-G508E/G512E/G516E Series (v4.0 or higher) EDS-G512E-8PoE Series (v4.0 or higher) EDS-608/611/616/619 Series (v1.1 or higher) EDS-728 Series (v2.6 or higher) EDS-828 Series (v2.6 or higher) EDS-G509 Series (v2.6 or higher) EDS-P510 Series (v2.6 or higher) EDS-P510A-8PoE Series (v3.1 or higher) EDS-P506A-4PoE Series (v2.6 or higher) EDS-P506 Series (v5.5 or higher) EDS-4008 Series (v2.2 or higher) EDS-4009 Series (v2.2 or higher) EDS-4012 Series (v2.2 or higher) EDS-4014 Series (v2.2 or higher) EDS-G4008 Series (v2.2 or higher) EDS-G4012 Series (v2.2 or higher) EDS-G4014 Series (v2.2 or higher)
EOM Products	EOM-104/104-FO Series (v1.2 or higher)
ICS Products	ICS-G7526/G7528 Series (v1.0 or higher) ICS-G7826/G7828 Series (v1.1 or higher) ICS-G7748/G7750/G7752 Series (v1.2 or higher) ICS-G7848/G7850/G7852 Series (v1.2 or higher) ICS-G7526A/G7528A Series (v4.0 or higher) ICS-G7826A/G7828A Series (v4.0 or higher) ICS-G7748A/G7750A/G7752A Series (v4.0 or higher) ICS-G7848A/G7850A/G7852A Series (v4.0 or higher)
IEX Products	IEX-402-SHDSL Series (v1.0 or higher) IEX-402-VDSL2 Series (v1.0 or higher) IEX-408E-2VDSL2 Series (v4.0 or higher)
IKS Products	IKS-6726/6728 Series (v2.6 or higher) IKS-6524/6526 Series (v2.6 or higher) IKS-G6524 Series (v1.0 or higher) IKS-G6824 Series (v1.1 or higher) IKS-6728-8PoE Series (v3.1 or higher) IKS-6726A/6728A Series (v4.0 or higher) IKS-G6524A Series (v4.0 or higher) IKS-G6824A Series (v4.0 or higher) IKS-6728A-8PoE Series (v4.0 or higher)
ioLogik Products	ioLogik E2210 Series (v3.7 or higher) ioLogik E2212 Series (v3.7 or higher) ioLogik E2214 Series (v3.7 or higher) ioLogik E2240 Series (v3.7 or higher) ioLogik E2242 Series (v3.7 or higher) ioLogik E2260 Series (v3.7 or higher) ioLogik E2262 Series (v3.7 or higher) ioLogik W5312 Series (v1.7 or higher) ioLogik W5340 Series (v1.8 or higher)
ioThinX Products	ioThinX 4510 Series (v1.3 or higher)

MC Products	MC-7400 Series (v1.0 or higher)
MDS Products	MDS-G4012 Series (v1.0 or higher) MDS-G4020 Series (v1.0 or higher) MDS-G4028 Series (v1.0 or higher) MDS-G4012-L3 Series (v2.0 or higher) MDS-G4020-L3 Series (v2.0 or higher) MDS-G4028-L3 Series (v2.0 or higher) MDS-G4012-4XGS Series (v3.0 or higher) MDS-G4020-4XGS Series (v3.0 or higher) MDS-G4028-4XGS Series (v3.0 or higher) MDS-G4012-L3-4XGS Series (v3.0 or higher) MDS-G4020-L3-4XGS Series (v3.0 or higher) MDS-G4028-L3-4XGS Series (v3.0 or higher)
MGate Products	MGate MB3170/MB3270 Series (v4.2 or higher) MGate MB3180 Series (v2.2 or higher) MGate MB3280 Series (v4.1 or higher) MGate MB3480 Series (v3.2 or higher) MGate MB3660 Series (v2.5 or higher) MGate 5101-PBM-MN Series (v2.2 or higher) MGate 5102-PBM-PN Series (v2.3 or higher) MGate 5103 Series (v2.2 or higher) MGate 5105-MB-EIP Series (v4.3 or higher) MGate 5109 Series (v2.3 or higher) MGate 5111 Series (v1.3 or higher) MGate 5114 Series (v1.3 or higher) MGate 5118 Series (v2.2 or higher) MGate 5119 Series (v1.0 or higher) MGate W5108/W5208 Series (v2.4 or higher) MGate 5217I Series (v1.0 or higher)
NPort Products	NPort S8455 Series (v1.3 or higher) NPort S8458 Series (v1.3 or higher) NPort 5110 Series (v2.10 or higher) NPort 5130/5150 Series (v3.9 or higher) NPort 5200 Series (v2.12 or higher) NPort 5100A Series (v1.6 or higher) NPort P5150A Series (v1.6 or higher) NPort 5200A Series (v1.6 or higher) NPort 5400 Series (v3.14 or higher) NPort 5600 Series (v3.10 or higher) NPort 5610-8-DT/5610-8-DT-J/5650-8-DT/5650I-8-DT/5650-8-DT-J Series (v2.7 or higher) NPort 5610-8-DTL/5650-8-DTL/5650I-8-DTL Series (v1.6 or higher) NPort IA5000 Series (v1.7 or higher) NPort IA5150A/IA5150AI/IA5250A/IA5250AI Series (v1.5 or higher) NPort IA5450A/IA5450AI Series (v2.0 or higher) NPort 6000 Series (v1.21 or higher) NPort 5000AI-M12 Series (v1.5 or higher)
PT Products	PT-7528 Series (v3.0 or higher) PT-7710 Series (v1.2 or higher) PT-7728 Series (v2.6 or higher) PT-7828 Series (v2.6 or higher) PT-G7509 Series (v1.1 or higher) PT-508/510 Series (v3.0 or higher) PT-G503-PHR-PTP Series (v4.0 or higher) PT-G7728 Series (v5.3 or higher) PT-G7828 Series (v5.3 or higher)
RKS Products	RKS-G4028 Series (v3.0 or higher)
SDS Products	SDS-3008 Series (v2.1 or higher) SDS-3016 Series (v2.1 or higher)
TAP Products	TAP-213 Series (v1.2 or higher) TAP-323 Series (v1.8 or higher) TAP-6226 Series (v1.8 or higher)
TN Products	TN-4516A Series (v3.6 or higher) TN-4516A-POE Series (v3.6 or higher)

	TN-4524A-POE Series (v3.6 or higher) TN-4528A-POE Series (v3.8 or higher) TN-G4516-POE Series (v5.0 or higher) TN-G6512-POE Series (v5.2 or higher) TN-5508/5510 Series (v1.1 or higher) TN-5516/5518 Series (v1.2 or higher) TN-5508-4PoE Series (v2.6 or higher) TN-5516-8PoE Series (v2.6 or higher)
UC Products	UC-2101-LX Series (v1.7 or higher) UC-2102-LX Series (v1.7 or higher) UC-2104-LX Series (v1.7 or higher) UC-2111-LX Series (v1.7 or higher) UC-2112-LX Series (v1.7 or higher) UC-2112-T-LX Series (v1.7 or higher) UC-2114-T-LX Series (v1.7 or higher) UC-2116-T-LX Series (v1.7 or higher)
V Products	V2406C Series (v1.0 or higher)
VPort Products	VPort 26A-1MP Series (v1.2 or higher) VPort 36-1MP Series (v1.1 or higher) VPort P06-1MP-M12 Series (v2.2 or higher)
WAC Products	WAC-1001 Series (v2.1 or higher) WAC-2004 Series (v1.6 or higher)
For MXview Wireless	AWK-1131A Series (v1.22 or higher) AWK-1137C Series (v1.6 or higher) AWK-3131A Series (v1.16 or higher) AWK-4131A Series (v1.16 or higher) Note: To use advanced wireless functions in MXview Wireless, the device must be in one of the following operation modes: AP, Client, Client-Router.

Package Contents

Number of Supported Nodes	Up to 2000 (may require purchase of expansion licenses)
---------------------------	---

Ordering Information

Model Name	No. of Supported Nodes	License Expansion	Add-on Service
MXview-50	50	-	-
MXview-100	100	-	-
MXview-250	250	-	-
MXview-500	500	-	-
MXview-1000	1000	-	-
MXview-2000	2000	-	-
MXview Upgrade-50	0	50 nodes	-
LIC-MXview-ADD-WIRELESS-MR	-	-	Wireless

© Moxa Inc. All rights reserved. Updated Apr 18, 2023.

This document and any portion thereof may not be reproduced or used in any manner whatsoever without the express written permission of Moxa Inc. Product specifications subject to change without notice. Visit our website for the most up-to-date product information.